

# Employee Success Starts with Manager Success



## Understanding the Connection

The manager-employee relationship forms the foundation of workplace success.

## Role of Managers

Managers provide guidance, direction, and support to their team members.

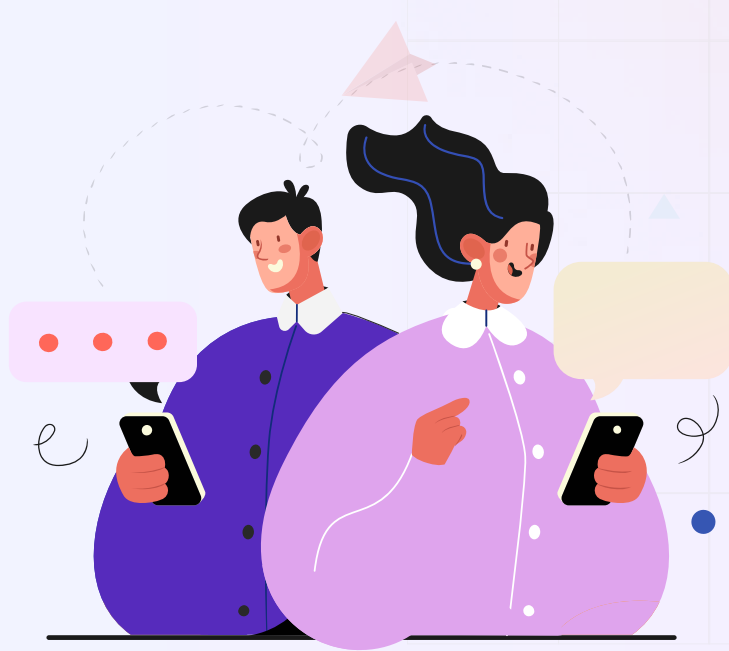


## Nurturing Growth

Effective managers nurture employee development, helping them thrive.

## Clear Communication

Open communication bridges gaps and ensures mutual understanding.



## Providing Feedback

Constructive feedback guides improvement and enhances performance.

## Fostering Collaboration

Managers foster teamwork and collaboration for collective success.



## Recognizing Contributions

Acknowledging achievements boosts morale and motivates employees.

## Balancing Workload

Balanced workloads contribute to employee well-being and productivity.



## Leading by Example

Effective managers set a positive example, inspiring their team.

## Conclusion

Manager success paves the way for employee success, creating a thriving workplace.

